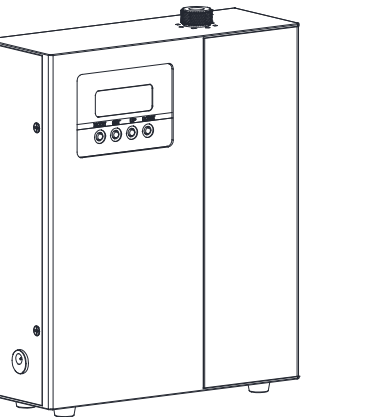


INSTRUCTION



DSQ3010-F Scent Diffuser User Manual

Introduction

DSQ3010-F has a built-in turbofan, which can quickly diffuse fragrance. The fragrance diffusion system is designed with two-fluid atomization technology. It has a built-in intelligent PCB control program and can be connected to the central air conditioning system. The product can be placed independently or wall-mounted. The appearance of the product is fashionable and atmospheric, and the diffusion is accurate and stable. Suitable for sales offices, shopping malls, 4S stores, hotels, airports, home, health centers and other places.

Attentions

Please read this manual in detail before using the device and keep it carefully.

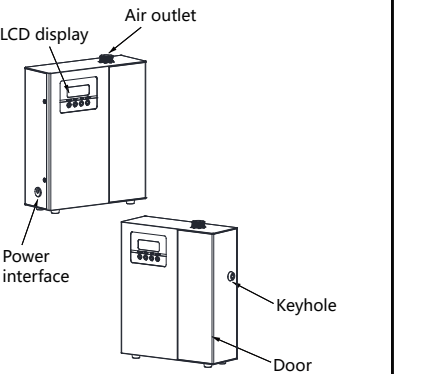
1. Please do not use overloaded power sockets, broken wire and charger. It may endanger your safety and cause a fire, please replace in time if it happens.
2. Please do not try to modify, disassemble or repair the device in order to avoid damage to the device, if you are not a technician. If the device is abnormal, please check whether it is operated normally according to the user manual, or check according to the Malfunction Debugging. If it cannot be solved, please contact seller timely.
3. Please do not invert or tilt the device when used. If the device needs to be transported to other sites, please maintain and clean the device (see Maintenance for details) first before package and transportation, in case of oil leakage to damage the device.
4. Please maintain and clean the device regularly to ensure the device in best working states.

Instruction of Essential Oil

1. Before refill canister with essential oil, please turn off the device for 2 minutes till oil of atomizer back to canister then take off the oil canister.
2. It's recommended to control the amount of essential oil and run out within 45 days, in order to avoid the deterioration of essential oils by oxidation.

Parameters

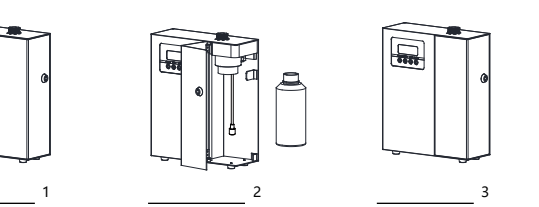
Model	DSQ3010-F
Size	W180*D65*H220 (mm)
Capacity	150ml
N.W	2.05kg
Coverage	300m ²
Voltage	DC12V-0.5A
Power	5.5W
Noise	≤42db
Package	W360*D285*H110 (mm)



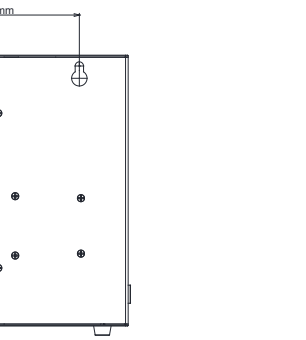
Accessories

Item	Power adapter	Atomizer core	Seal ring	User manual	Expansion screw	Key
Diagram						
Item	Φ6mm Pipe	HVAC connector				
Diagram						

Installation



1. Use the key to open the front door of the device.
2. Take out the bottle and refill essential oil.
3. Screw the bottle into the atomizer, close the door and connect to the power supply, set and start using the equipment.
4. If you want to connect with central air conditioning system, please use the connector and external pipe.

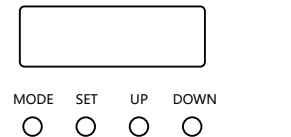


(Dimension of punching (mm))
(Diagram of Wall-mounted Installation)

Description of LCD display

Local time setting

Adjust the system time as current hour, minute and date. The time system is 24-hour.
Press [SET] for first time that hour data flashes, then press [UP]/[DOWN] to adjust.
Press [SET] for second time that minute data flashes, then press [UP]/[DOWN] to adjust.
Press [SET] for third time that workday flashes, then press [UP]/[DOWN] to adjust.
Press [SET] for fourth time to save the local time setting.



Work period and scent density setting

1. Press [MODE] for first time that the bottom left corner LCD shows {EVENT 1 ON}, meaning of 1st work period's on time.
Press [SET] for first time that hour data flashes, and press [UP]/[DOWN] to adjust.
Press [SET] for second time that minute data flashes, and press [UP]/[DOWN] to adjust.
Press [SET] for third time that workday data flashes, then press [UP]/[DOWN] to adjust.
Optional workday group: (MON to SUN) (MON) (TUE) (WED) (THU) (FRI) (SAT) (SUN) (MON, WED, FRI) (TUE, THU, SAT) (MON to WED) (TUE to THU) (MON to FRI) (SAT, SUN) (MON to SAT)

2. Press [MODE] for second time that the bottom left corner LCD shows {EVENT 1 OFF}, meaning of 1st work period's off time. When hour data flashes, press [UP]/[DOWN] to adjust. Then press [SET] that minute data flashes, and press [UP]/[DOWN] to adjust.
3. Press [MODE] for third time that the top left corner LCD shows {SCENT WORK}, meaning of 1st work period's scent spray time. Then press [UP]/[DOWN] to adjust spray time within 5-300 seconds.
4. Press [MODE] for fourth time that the top left corner LCD shows {SCENT PAUSE}, meaning of 1st work period's scent pause time. Then press [UP]/[DOWN] to adjust pause time within 5-300 seconds.

If necessary to set 2nd / 3rd / 4th work period, when finish the setting of 1st work period's setting, press [MODE] then press [SET] to repeat the above steps. If no necessary to set 2nd / 3rd / 4th work period, press [MODE] times to skip till it back to local time interface.

Tips

1. The time system is 24-hour, and the valid setting is 00:00-23:59. If the work period exceed 00:00, then it need to set into two work periods respectively. For example, if the ON time is 19:00 and OFF time is 03:00, then setting must be two work periods: 1st work period is 19:00-23:59; 2nd period is 00:00-03:00. The work period cannot be set repeatedly during same workday, otherwise the system will not recognize it.
2. Reset the default setting by pressing [MODE] for 10 seconds. Default Setting: 1st work period is 08:00-22:00, MON to SUN, SCENT WORK is 60 seconds, SCENT PAUSE is 60 seconds.

Maintenance

- In order to ensure the best diffusing effect, please check and maintain the device every six month, or when you replace a new fragrance, or when the diffusing effect get weak as the following steps.
1. Take off the oil canister which is spent.
 2. Filling industrial alcohol into the canister and clean it.
 3. After clean the oil canister, refill canister with little alcohol and install it on the device then make the device stay in working status for 5-8 minutes.
 4. Turn off the power when finishing cleaning.

Malfunction Debugging

Please try to solve the problem as below before fixing the machine.

Breakdown	Solution	Breakdown	Solution
Not working	- Check if power adapter is DC12V-0.5A, and check if DC power interface is well-connected or not. - Check if device is not in work period.	Oil leakage	- Check if oil canister connects to atomizer closely. - Check if seal ring is deformed or damaged. - Check if atomizer is damaged.
No mist Mist gets weak	- Check if air pump works or not, and if airflow from air outlet. - Check if atomizer core and oil tube are loose or blocked. - Check if seal ring gets damaged or fall off.	Abnormal noise	- Check if air pump is loose, please fix it correctly. - Check if air pump is damaged, please replace a new one.

After-sales Service

The warranty is 1 year from the date of sale, not including device shell, adapter, electric wires, seal ring and the other vulnerable parts, as well as the damage caused by human or accident. Permanent maintaining for value will be provided if the machine exceed the warranty. If there is any issue of after-sales, please contact authorized sales service in corresponding area, or contact Sales Center directly.

Warranty Card

This card is the warranty for device's quality, please fill it with actual information.

Warranty card one		Warranty card two	
Start Date of Warranty Period		Start Date of Warranty Period	
Malfunction Description		Malfunction Description	
Date of Verify		Date of Verify	
Maintenance Result		Maintenance Result	
Maintainer's Signature		Maintainer's Signature	